



PIN AND BUSH COUPLING

❑ INTRODUCTION :

- This type of coupling has pins and it works with coupling bolts.
- Rubber bushes are used over the pins.
- Pins are rigidly fastened by nuts to one of the flange and kept loose on the other flange.
- Coupling has two halves dissimilar in construction.
- This coupling is used to connect shafts which having a small parallel misalignment, angular misalignment or axial misalignment.
- In this coupling the rubber bushing absorbs shocks and vibration during its operations.
- This type of coupling is mostly used to couple electric motors and machines.



❑ INDUSTRY APPLICATION :

- Pump , Fan , Conveyors , Crusher , Mill etc.

❑ SALIENT FEATURES :

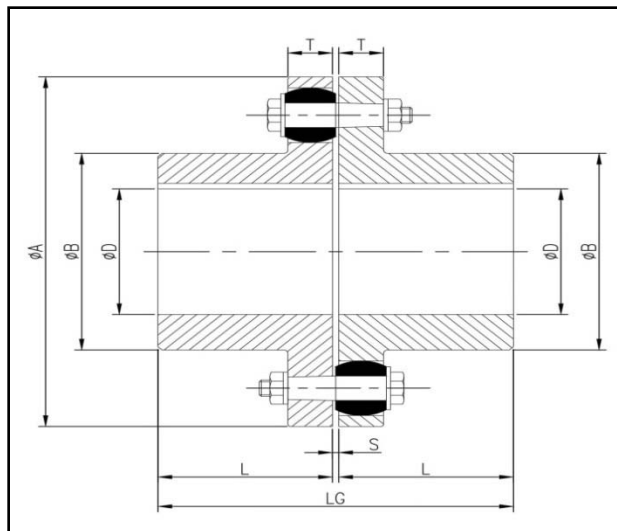
- Frequently, the coupling is used to connect the gear shaft to the driven machine.
- Up to 1,30,000 KGM.
- Vertical or horizontal operation.
- 80 or 90 shore hardness close fitting flexible elements.
- Steel or cast iron hubs.
- Brake drum or disc available as well as special designs.
- Simple Assembly.
- Parallel or Taper bore options.



❑ ADVANTAGE :

- Flexible fail-safe pin and bush coupling for medium up to high torques.
- Low weights and mass moments of inertia.
- Independent of direction of rotation (suitable for reversing operation).
- Suitable for plug-in assembly (blind assembly, bell housing installation).
- Torque range of the standard series between 20 KGM and 1,30,000 KGM
- Can be used in potentially explosive atmospheres.

□ DIMENSIONS :



□ DIMENSIONS CHART FOR PIN AND BUSH COUPLING :

SIZE	TORQUE Nm	SPEED rpm	BORE ØD min. (mm)	BORE ØD max. (mm)	ØA (mm)	ØB (mm)	T (mm)	L (mm)	LG (mm)	S (mm)	WEIGHT (kg)
TPB105	200	10000	-	32	105	53	13	45	93	3	1.9
TPB125	350	9000	-	40	125	65	16	50	103	3	3.2
TPB144	500	7800	-	50	144	76	16	55	113	3	4.5
TPB162	750	6900	-	55	162	85	20	60	123.5	3.5	6.7
TPB178	950	6300	-	70	178	102	20	70	143.5	3.5	9.7
TPB198	1300	5600	-	80	198	120	20	80	163.5	3.5	12.9
TPB228	2200	4900	-	85	228	129	26	90	183.5	3.5	19
TPB252	2750	4400	-	100	252	150	26	100	203.5	3.5	26.3
TPB285	4300	3900	48	110	285	164	32	110	224.5	4.5	39
TPB320	5500	3500	55	125	320	180	32	125	254.5	4.5	53
TPB360	7800	3100	65	135	360	200	42	140	284.5	4.5	78
TPB400	12500	2800	75	150	400	230	42	160	324.5	4.5	110
TPB450	18500	2500	85	170	450	260	52	180	365.5	5.5	163
TPB500	25000	2200	95	190	500	290	52	200	405.5	5.5	217
TPB560	39000	2000	100	210	560	250	68	220	446	6	274
TPB630	52000	1800	100	235	630	250	68	240	486	6	352
TPB710	84000	1600	110	250	710	290	80	260	527	7	507
TPB800	110000	1000	125	280	800	320	80	290	587	7	670
TPB900	150000	900	140	310	900	360	90	320	647.5	7.5	940
TPB1000	195000	810	150	340	1000	395	90	350	707.5	7.5	1200
TPB1120	270000	700	160	370	1120	360	100	380	768.5	8.5	1470
TPB1250	345000	650	180	400	1250	410	100	420	848.5	8.5	1850

TEAM CONSULTANTS AND ENGINEERS